



PARA LIGHT ELECTRONICS CO., LTD.
4F, No.1, Lane 93, Chien Yi Road, Chung Ho City, Taipei, Taiwan
Tel: 886-2-2225-3733 Fax: 886-2-2225-4800
E-mail: para@para.com.tw <http://www.para.com.tw>

DATA SHEET

PART NO.: ITR2012001

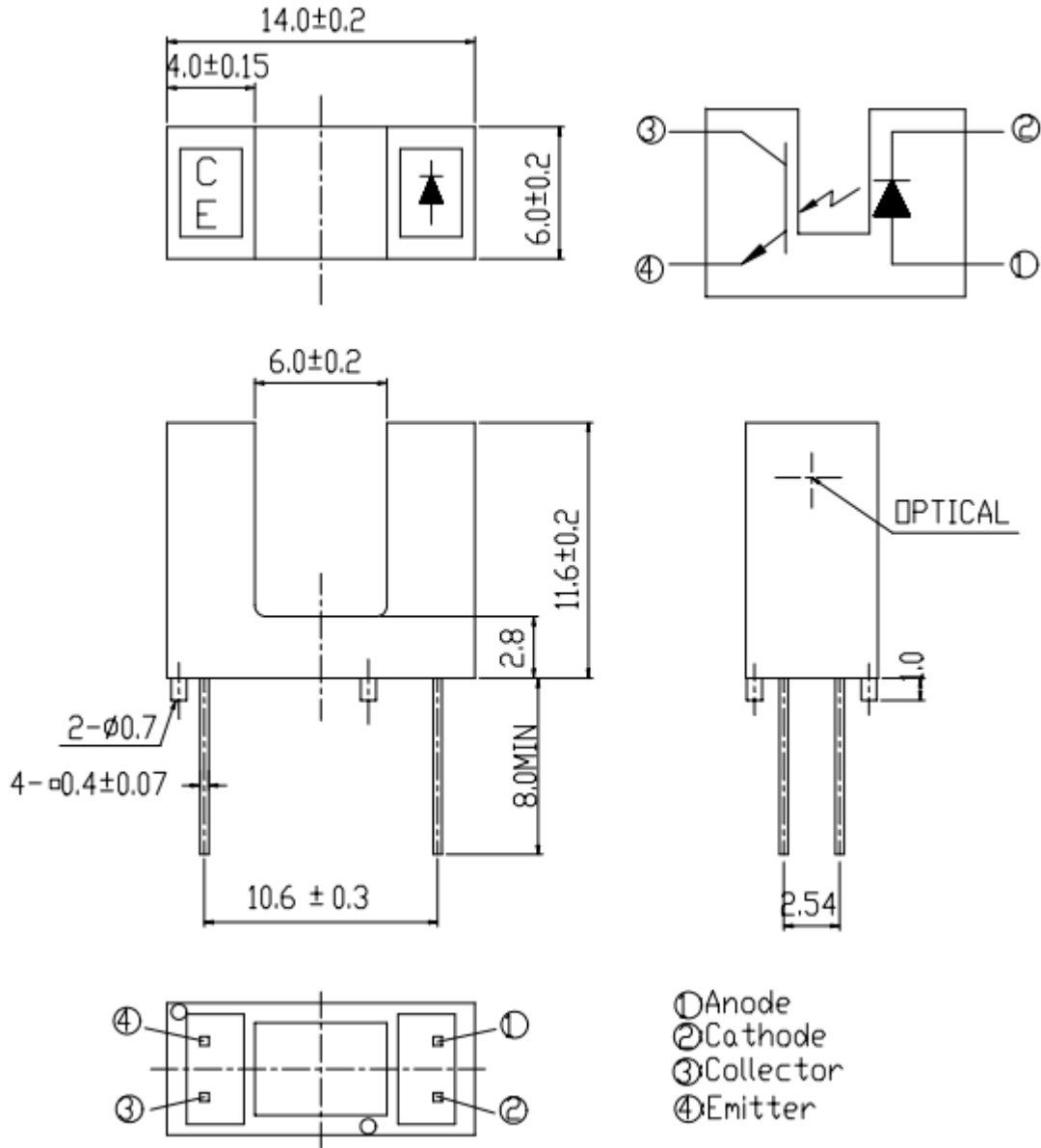
REV: A / 0

CUSTOMER'S APPROVAL : _____ DCC : _____

DRAWING NO. : DS-31P-20-XXXX

DATE : 2020-12-04 PAGE

1 of 7



备注：1、所有尺寸单位为 mm

2、未标注尺寸公差为 ± 0.25 mm

Features

- Wide gap 6mm
- Slit 1.6mm
- PWB mounting type package
- Pb free
- This product itself will

Applications

- Printers
- FAX
- Copiers
- Scanners
- Amusement machines

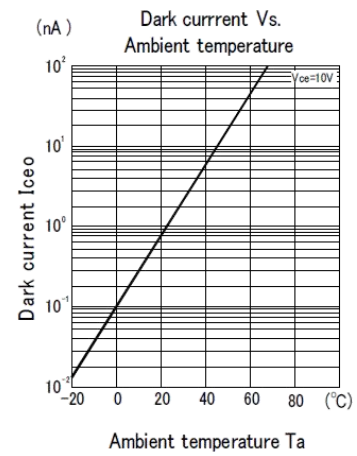
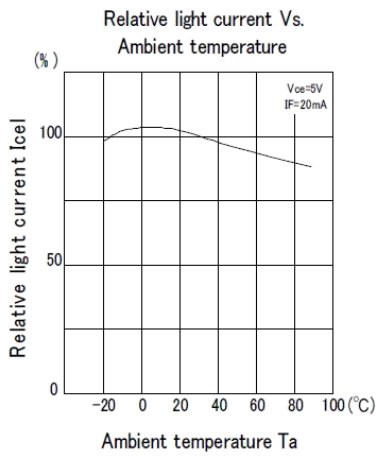
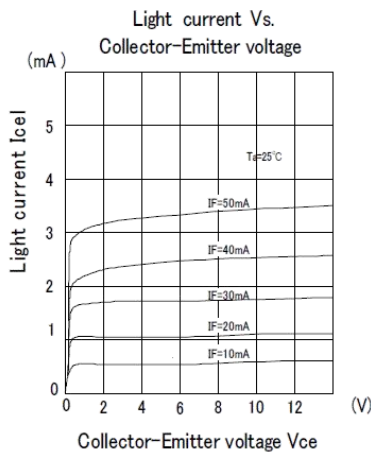
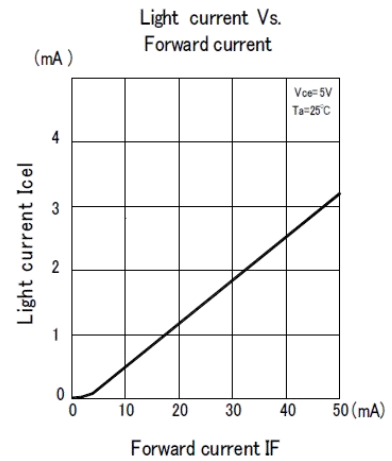
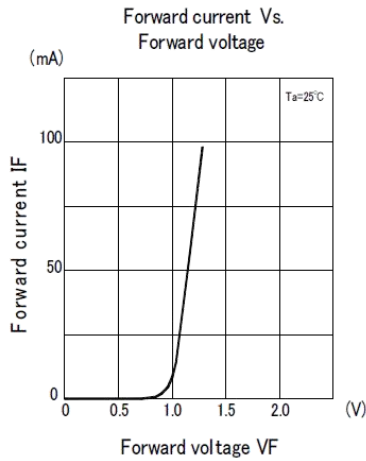
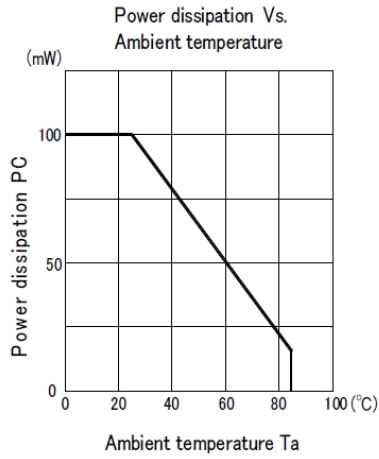
Absolute Maximum Ratings

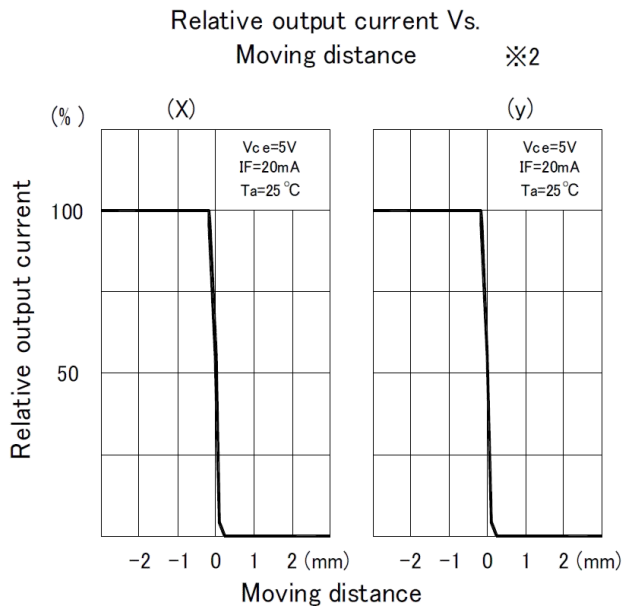
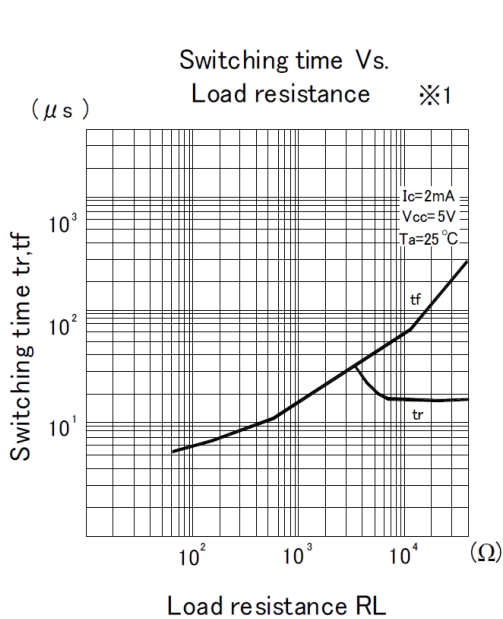
Parameter (Ta=25°C)		Symbo	Ratings	Unit
Input (Emitter)	Power Dissipation at(or Below)25 Free Air Temperature	Pd	75	mW
	Reverse Voltage	VR	5	V
	Forward Current	IF	50	mA
	Peak Forward Current(Pulse width ≤ 100μs, Duty cycle=1%)	IFP	1	A
Output (Detector)	Collector Power Dissipation	PC	75	mW
	Collector Current	IC	20	mA
	Collector-Emitter Voltage	VCEO	30	V
	Emitter-Collector Voltage	VECO	5	V
Operating Temperature		TOPR	-25~+85	°C
Storage Temperature		TSTG	-40~+100	°C
Lead Soldering Temperature (2mm from body for 5 seconds)		TSOL	260	°C

Electro-Optical Characteristics: (Ta=25°C)

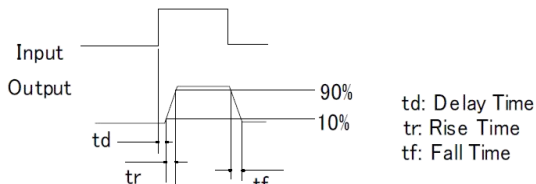
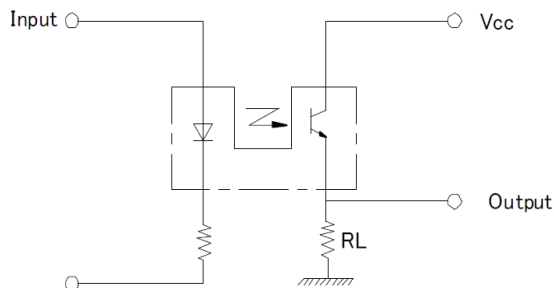
Parameter (Ta=25°C)		Symbo	Min.	Typ.	Max.	Unit	Conditions
Input (Emitter)	Forward Voltage	VF	--	1.2	1.5	V	IF=20mA
	Reverse Current	IR	--	--	10	μA	VR=5V
	Peak Wavelength	λP	--	940	--	nm	IF=20mA
Output (Detector)	Dark Current	ICEO	--	--	100	nA	VCE=20V, Ee=0mW/cm ²
	C-E Saturation Voltage	VCE(sat)	--	--	0.4	V	IC=2mA, Ee=1mW/cm ²
Transfer Characteristics	Collect Current	IC(ON)	0.5	--	--	mA	VCE=5V, IF=20mA
	Rise time	tr	--	15	--	μS	VCE=5V, IC=1mA, RL=1KΩ
	Fall time	tf	--	15	--	μS	VCE=5V, IC=1mA, RL=1KΩ

Typical Electrical/Optical/Characteristics Curves

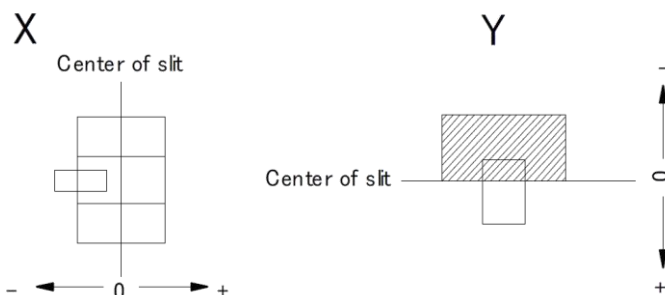




*1 Switching time measurement circuit



*2 Method of measuring position detection characteristic



Packing Quantity Specification

- 1.90PCS/tube.
- 2.4320PCS/bos
- 3.17280pcs/Carton

Notes

1. Above specification may be changed without notice. PARA LIGHT will reserve authority on material change for above specification.
2. When using this product, please observe the absolute maximum ratings and the instruction for using outlined in these specification sheets. PARA LIGHT assumes no responsibility for any damage resulting from use of the product which does not comply with the absolute maximum ratings and the instructions included in these specification sheets.
3. These specification sheets include materials protected under copyright of PARA LIGHT corporation. Please don't reproduce or cause anyone to reproduce them without PARA LIGHT 's consent.